

COMBINED SEWAGE OVERFLOW CHAMBER



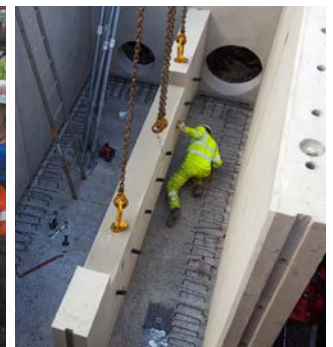
Our system uses a single piece unit up to a maximum internal footprint of 5000 x 3500mm (Vario Chamber) or a precast element and panel system to construct a WRc Approved sealed chamber of any size, depending on site requirements.

The preferred application is site specific and Kijlstra engineers will propose the optimum design solution for each individual project by utilising a wealth of experience and expertise.

COMBINED SEWAGE OVERFLOW, UNDERGROUND TANK SYSTEMS AND VARIO CHAMBERS

Benefits

- Complete design package
- Accompanying calculations and drawings
- WRc-certified
- Minimal in-situ work with no in-situ concrete surround
- Reduced in-situ temporary works
- Traffic management to a minimum
- Versatile solutions
- Factory fitted pipework and flow controls for factory finished quality
- Designated Kijlstra project engineers from design to installation
- 25 years' experience in the market



Dimensions

Single vario chambers up to 5000 x 3500 – WRc approved watertight modular system for larger and bespoke requirements.

Loadings

As required D400, E600, F900.

Standard concrete quality

C40/50 and exposure classes XA2 equivalent, XC4, XD2 and XF4 (DC-2)
For medium-high sulphate exposure: C40/50 and exposure classes XA3 equivalent, XC4, XD3, XF4 and XS2 (DC-4).

Project In Focus: Maesteg

Maesteg Row 'Combined Sewer Overflow' works included a new CSO chamber with internal dimensions 3.5m length x 2m wide x 2.1m deep, mechanical screen and associated pipelines and manholes. The chamber was pre-fabricated off-site by Kijlstra. Preparation works in advance of delivery included construction of a 5m x 4m x 3m cofferdam designed by MGF and concrete building slab.

The pre-cast units were placed in position using a 60ft mobile crane.

The pre-cast option was chosen to eliminate and minimise risks associated with a traditional in-situ pour ie work at height, steel fixing, manual handling, concrete works etc.

As well as the health and safety benefits, the pre-cast option also saved time on the overall programme. Effectively 12 days are typically required for an in-situ pour compared to only 1 day for the pre-cast option with the added benefits associated with a factory finished product.



Kijlstra Precast Ltd

Hookend Barn, 7 Whitehall Buildings,
Alderminster, Stratford-upon-Avon,
Warwickshire
CV37 8BW

T +44 (0) 1789 451040
F +44 (0) 1789 451041
E info@kijlstra.co.uk

www.kijlstra.co.uk

 **Kijlstra**
Precast